



# WOODLAWN LITTLE LEAGUE

## EQUIPMENT NEEDED

### BAT REQUIREMENTS:



#### T-BALL

Under the USABat standard, certified Tee Ball bats (26" and shorter) will feature the USA Baseball mark and text which reads ONLY FOR USE WITH APPROVED TEE BALLS.



#### BASEBALL

Peewee, Minors & Majors: No more than 33in long and 2 5/8 in diameter. Must have the USA baseball stamp.

50/70 & Juniors: No more than 34in long and 2 5/8 in diameter. Must have the USA baseball stamp OR BBCOR is permitted.

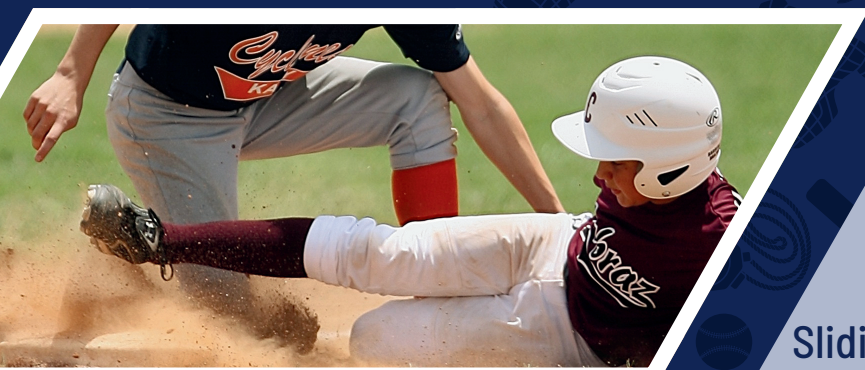
Seniors: No more than 36in long and 2 5/8 in diameter MUST be BBCOR.

Wood bats are permitted in all divisions.



#### SOFTBALL

No more than 33in long and 2 1/4 in diameter (JR/SR 34in long). Must be 1.20 BPF in all divisions!



## ADDITIONAL EQUIPMENT

- Batting Helmet
- Fielders Glove
- Molded Cleats (Jr/SR Spikes)
- Athletic Cup (Males)
- Water Bottle

Sliding Mitts and Batting Gloves are permitted.



[www.woodlawnlltn.org](http://www.woodlawnlltn.org)



2910 Woodlawn Park Road